

2025

---

# HELIPAD LIGHTING CATALOG

[www.aerolighting.swiss](http://www.aerolighting.swiss)



# ■ Welcome

At Aerolighting SA, we recognize that safety, reliability, and performance are non-negotiable when it comes to helipad lighting solutions. That's why our products are crafted with precision and engineered to exceed the highest industry standards, ensuring the safety of pilots, crew, and passengers in every operation.

Our cutting-edge helipad lighting systems are not only built for durability but are also designed to optimize operational efficiency with minimal maintenance. By choosing Aerolighting, you're investing in long-lasting, high-performance products that deliver exceptional value, reducing costs over time while enhancing safety.

Safety is our top priority. Our lighting solutions ensure optimal visibility and reliability even in the most demanding conditions, providing peace of mind during critical operations.

Moreover, our dedication to customer service means we're with you every step of the way, offering tailored support and solutions to meet your unique needs. Explore our catalog and discover how our innovative lighting systems can elevate the safety and efficiency of your operations.



# ■ Index

Inset lights	04
Floodlights	08
Elevated lights	11
Low profil lights	13
TD/PM - ASPSL	15
Wind direction indicator	17
Heliport Beacon	19
HAPI - VAGS	21
Base and adapter	23
Control panel	25
Radio and GSM controller	27
Automatic surveillance and control	29
Power supply and regulator	31
Portable lighting system	33

# ■ Inset Lights

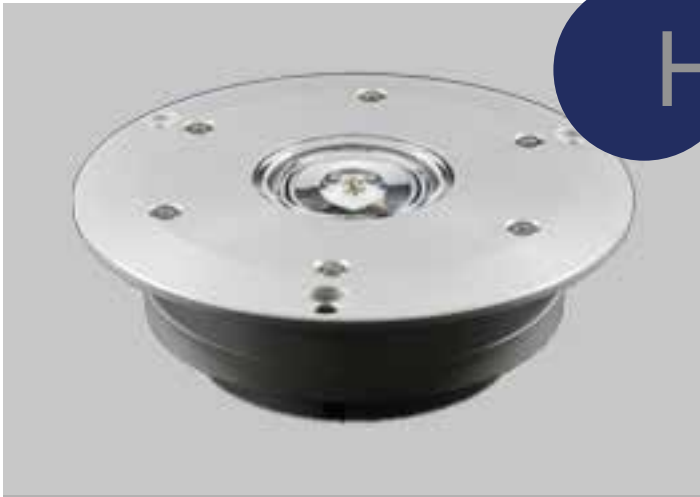
## Efficient and Durable Choice

Inset lights provide an exceptionally efficient solution for helipads, delivering both safety and durability. These lights are embedded into the ground, minimizing any obstruction or risk to helicopters during landing and takeoff. Their sleek, low-profile design ensures seamless integration into the surface, offering reliable illumination while significantly reducing maintenance requirements and operational hazards.

By choosing inset lights, you're selecting a solution that enhances both safety and performance with minimal impact on your helipad's layout.



“An ideal choice for high-demand environments, offering unmatched durability and performance under heavy use”



# Helix



Universal and robust, the Helix delivers exceptional durability with very low extrusion, ensuring minimal obstruction on helipads. Its versatile design makes it the ideal choice for high-demand environments.

Infrared integrated in all versions



NVG/UAV Ready



Offshore Ready

## Use

ICAO Annex 14 Vol II - EASA

CAP 437 - STANAG

ICAO Annex 14 Vol I and other

- ☒ TLOF
- ☐ FATO
- ☐ Flight path alignment
- ☐ Aiming
- ☒ Perimeter
- ☐ Perimeter
- ☐ Landing direction

- ☒ Taxiway Edges
- ☐ Other
- ☐ InfraRed only

Main characteristics:			
Type:	Helix	Adressing - Monitoring:	DALI compliant
Diameter:	150mm	Material:	Machnied Aluminum - borosilicate



# Helix 120



The compact 120 mm Helix offers the same exceptional durability, making it perfect for integration into aluminum platforms or as a replacement solution.

Infrared integrated in all versions



NVG/UAV Ready



Offshore Ready

## Use

ICAO Annex 14 Vol II - EASA

CAP 437

ICAO Annex 14 Vol I and other

- ☒ TLOF
- ☐ FATO
- ☐ Flight path alignment
- ☐ Aiming
- ☒ Perimeter

- ☒ Taxiway Edges
- ☐ Other
- ☐ InfraRed only

Main characteristics:			
Type:	Helix 120	Adressing - Monitoring:	DALI compliant
Diameter:	120mm	Material:	Machnied Aluminum - borosilicate



# HeliX 140



The compact 140 mm Helix offers the same exceptional durability, making it perfect for integration into aluminum platforms or as a replacement solution.

Infrared integrated in all versions



NVG/UAV Ready



Offshore Ready

## Use

ICAO Annex 14 Vol II - EASA

CAP 437

ICAO Annex 14 Vol I and other

☒ TLOF

☒ Perimeter

☒ Taxiway Edges

☐ FATO

☒ Other

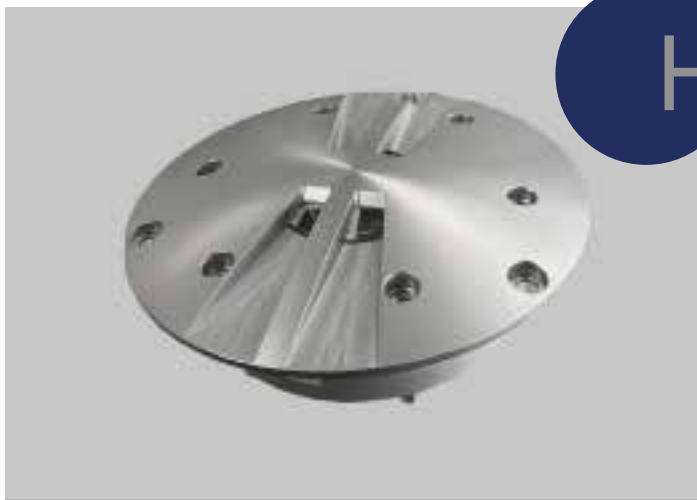
☐ Flight path alignment

☒ InfraRed only

☐ Aiming

### Main characteristics:

Type:	HeliX	Addressing - Monitoring:	DALI compliant
Diameter:	140mm	Material:	Machined Aluminum - borosilicate



# HeliX Bi



With unparalleled robustness, the Helix Bidirectional is designed for taxiway centerlines and various other uses across multiple industries. Its durable construction ensures reliable performance.

With unparalleled robustness, the Helix Bidirectional is ideal for applications such as taxiway centerlines, intrusion barriers, and marking the end of access roads or signaling hazards. Designed for both airports and heliports, this versatile light provides reliable performance across multiple environments, ensuring safety in even the most demanding conditions.

## Use

ICAO Annex 14 Vol I

Other

☒ Taxiway centerline

☒ Other

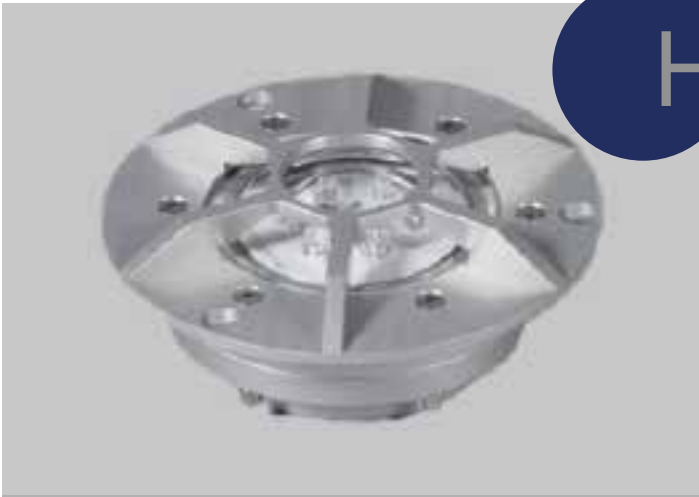
☒ Other

☒ Other

☒ Other

### Main characteristics:

Type:	HeliX Bi	Addressing - Monitoring:	DALI compliant
Diameter:	150mm	Material:	Machined Aluminum - borosilicate



# HFTR



Built for durability, the HF/TR features a robust aluminum housing that shields the glass from impacts. Its design also ensures resistance to snowplow operations, making it ideal for high-traffic and harsh environments.

Infrared integrated in all versions



NVG/UAV Ready



Offshore Ready

## Use

ICAO Annex 14 Vol II - EASA      ICAO Annex 14 Vol I and other

- TLOF
- Taxiway edges
- FATO
- Other
- Flight path alignment
- Other
- Aiming

Main characteristics:			
Type:	HFTR	Adressing - Monitor-ing:	DALI compliant
Diameter:	150mm	Material:	Machnied Aluminum - borosilicate



# HelarX



The HelarX is the most robust helipad light on the range. Its glass components are fully encased in an aluminum frame, preventing direct contact with the glass. This design provides extreme durability, making it suitable for the toughest environments. First delivery is expected in mid-2025.

Infrared integrated in all versions



NVG/UAV Ready



Offshore Ready

Available color:

- Green
- Blue
- Red
- Yellow
- White

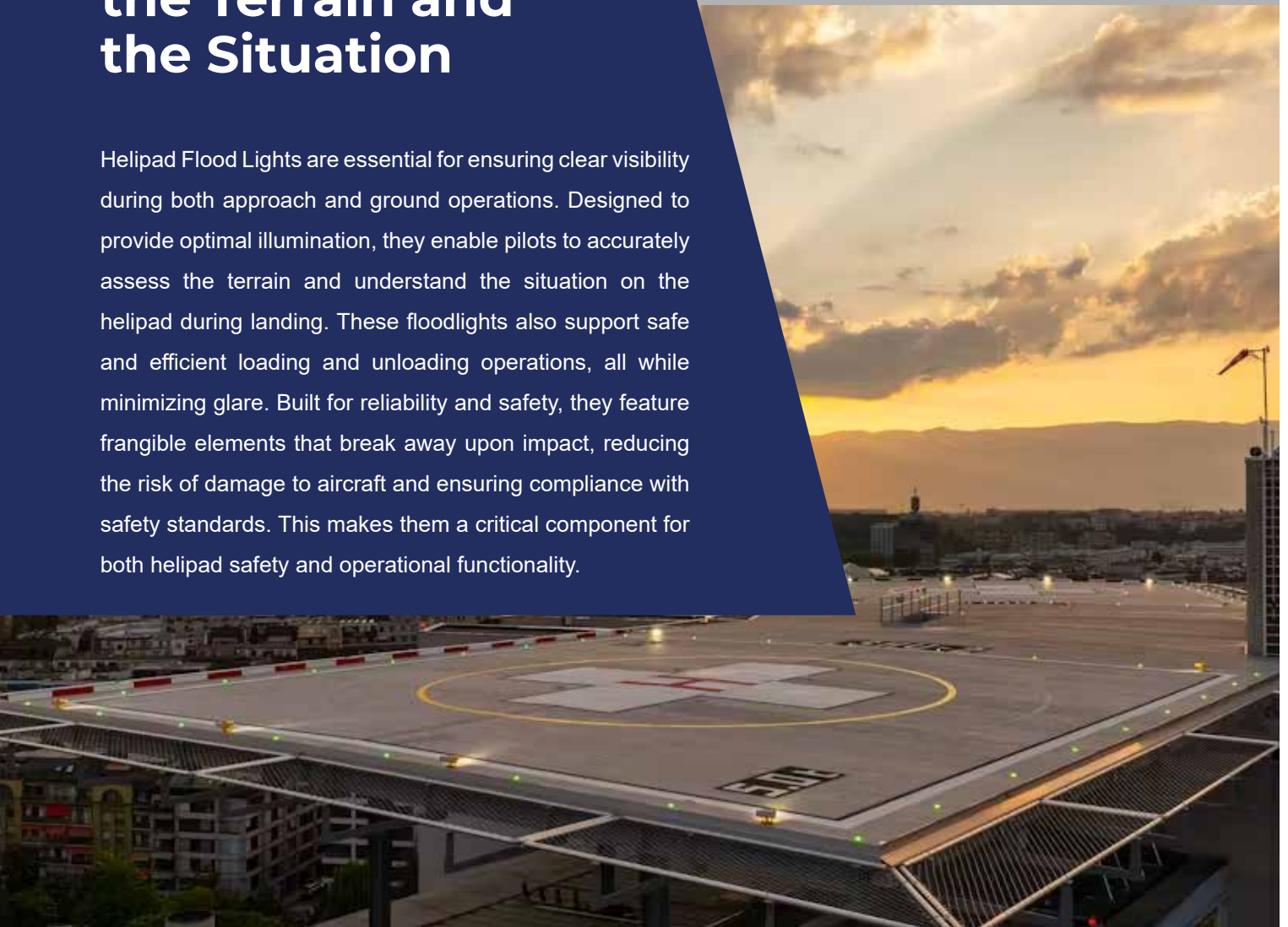
Main characteristics:			
Type:	HelarX	Adressing - Monitor-ing:	Yes
Diameter:	150mm	Material:	Machnied Aluminum - borosilicate



# ■ Floodlights

## Understanding the Terrain and the Situation

Helipad Flood Lights are essential for ensuring clear visibility during both approach and ground operations. Designed to provide optimal illumination, they enable pilots to accurately assess the terrain and understand the situation on the helipad during landing. These floodlights also support safe and efficient loading and unloading operations, all while minimizing glare. Built for reliability and safety, they feature frangible elements that break away upon impact, reducing the risk of damage to aircraft and ensuring compliance with safety standards. This makes them a critical component for both helipad safety and operational functionality.



“Providing a clear reading of the ground, every time.”





## FloodLed 4400



Widely used across the globe, the FloodLED 4400-B offers exceptional versatility and reliability. Designed for helipads and various other environments, it provides powerful illumination for safe operations without causing glare. Its robust, frangible design ensures both durability and safety, making it a trusted choice for demanding applications.

### Use

ICAO Annex 14 Vol II - CAP437

☐ Flood lighting

Infrared integrated in all versions



**Offshore Ready**

#### Main characteristics:

Type:	FloodLed 4400 B	Addressing - Monitoring:	Optional, DALI compliant
Peak intensity:	20'000cd	Material:	Machined Aluminum - mineral glass
Power:	45W	Finish:	Powder-coated
Voltage:	110/230 VAC - 48VDC - 24VDC	Life hours:	Up to 100'000



## FloodMax



Designed to meet the needs of larger helipads, the FloodMax offers increased power and an advanced asymmetric beam for enhanced illumination. Its powerful, focused lighting ensures optimal visibility across expansive areas, making it ideal for next-generation helipads. Built for reliability, the FloodMax provides efficient, glare-free lighting.

### Use

ICAO Annex 14 Vol II - CAP437

☐ Flood lighting

Infrared integrated in all versions



**Offshore Ready**

#### Main characteristics:

Type:	FloodMax	Addressing - Monitoring:	Optional, DALI compliant
Peak intensity:	40'000cd	Material:	Machined Aluminum - mineral glass
Power:	65W	Finish:	Powder-coated
Voltage:	110/230 VAC - 48VDC	Life hours:	Up to 100'000



# FloodLed 1150



The FloodLED Low Power offers a simple and economical solution for small helistations. Providing reliable performance with reduced energy consumption, it delivers sufficient illumination for safe operations while keeping costs low, making it ideal for smaller-scale installations.

## Use

ICAO Annex 14 Vol II - CAP437

☐ Flood lighting

Main characteristics:			
Type:	FloodLed 1150	Adressing - Monitoring:	No
Peak intensity:	5000cd	Material:	PP, Aluminum, PMMA
Power:	17W	Life hours:	Up to 50'000
Voltage:	24VDC	Technology:	Power LED

## Competitive Advantage

At Aerolighting SA, we believe that the quality and performance of our products speak for themselves, serving as our most compelling advertisement. From the design phase onward, we prioritize the needs of pilots, installers, operators, and technicians, ensuring that our lighting solutions are optimized to meet their unique requirements.



# ■ Elevated Lights

**A reliable and simple solution, offering clear visibility quick installation for any helipad.**

Elevated helipad lights provide an alternative to inset lights, offering clear, highly visible guidance for both day and night operations. These lights are ideal for environments where inset lighting may not be practical. With a simpler installation process, they can be easily fixed directly to the surface or ground, reducing setup time and complexity. Built for durability, they ensure reliable performance in all weather conditions.



“Clear visibility without the need for extensive ground work”



# LowdoLed MK3



The LowdoLED MKIII is a robust, elevated helipad light designed for maximum durability and visibility. With its frangible design and advanced LED technology, it ensures reliable performance in all weather conditions, while offering easy installation and maintenance.

Infrared integrated in all versions



NVG/UAV Ready



Offshore Ready

## Use

ICAO Annex 14 Vol II - EASA

CAP 437 - STANAG

ICAO Annex 14 Vol I and other

- ☒ TLOF
- ☐ FATO

- ☒ Perimeter

- ☒ Taxiway Edges
- ☐ Other

Main characteristics:			
Type:	LowdoLed MK3	Adressing - Monitor- ing:	DALI compliant
Height:	<250mm	Material:	Machnied Aluminum - borosilicate



# LowdoLed MKII



The LowdoLED MKII is a durable, low-profile helipad light designed for reliable performance in harsh environments. With its efficient LED technology and frangible design, it ensures long-lasting durability.

## Use

ICAO Annex 14 Vol II - EASA

ICAO Annex 14 Vol I and other

- ☒ TLOF
- ☐ FATO
- ☐ Flight path alignment

- ☒ Taxiway Edges
- ☒ Obstruction Type A and B
- ☒ InfraRed only

Main characteristics:			
Type:	Lowdoled MKII	Adressing - Monitor- ing:	Option, DALI Compliant
Height:	<250mm	Material:	Machnied Aluminum - borosilicate

# ■ Low Profile Lights

## Low Profile, High Performance

Our low-profile lights are designed to meet the latest standards set by ICAO Annex 14, featuring a total height of less than 50 mm. This compact design ensures minimal obstruction while maintaining full functionality and high performance. With simple installation and fixation, these lights offer seamless integration into any helipad setup, reducing both time and complexity. Despite their low profile, these lights deliver top-tier quality, reliability, and durability.



“Quick and hassle-free installation, ensuring minimal down-time.”





# HeLow



The Helow low-profile light provides reliable, high-performance illumination for helipads. Designed to meet ICAO standards, it features a compact design under 50 mm, ensuring minimal obstruction while delivering excellent visibility.

Infrared integrated in all versions



NVG/UAV Ready



Offshore Ready

## Use

ICAO Annex 14 Vol II - EASA

CAP 437 - STANAG

ICAO Annex 14 Vol I and other

- TLOF
- FATO
- Flight path alignment
- Aiming
- Perimeter
- Perimeter
- Landing direction

- Taxiway Edges
- Other
- InfraRed only

Main characteristics:			
Type:	HeLow	Addressing - Monitoring:	DALI compliant
Height:	<50mm	Material:	Machnied Aluminum - borosilicate

## >2000 Helipads

Aerolighting SA is a leading producer and distributor of high-quality lighting solutions for airfields, helipads, and obstacle lighting. What sets us apart is our expertise in helipad lighting. As pioneers in this field, we have illuminated over 2,000 helipads worldwide. Each year, we provide innovative, reliable lighting solutions for more than 200 helipads, serving sectors such as hospitals, military installations, and other critical facilities.



# ■ TD/PM - Light segment

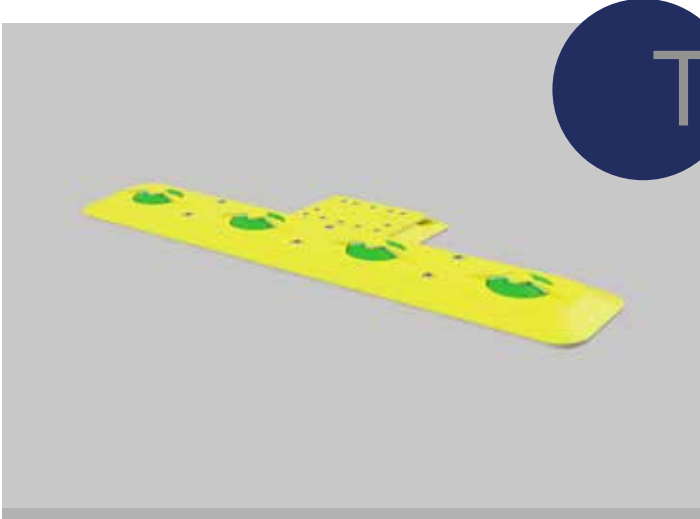
## For Critical Visibility

TD/PM lights are essential for providing clear and precise visual cues during helicopter landings. These lights are specifically designed to mark the touchdown and positioning zones on helipads, ensuring that pilots can safely and accurately navigate their approach. Engineered for durability and compliance with international aviation standards, TD/PM lights offer high-visibility illumination in all weather conditions. Their robust construction and reliable performance make them a critical component in enhancing visual aids for every helipad.



“On surface lighting”





TD-X



The TD-X is a robust, low-profile LED light for helipads, designed to meet CAP437 and ICAO standards. Built for high-demand environments, it features increased static and dynamic load capacity to minimize damage. Fully waterproof for its entire lifetime, this light is built to last.

Infrared integrated in all versions



NVG/UAV Ready



Offshore Ready

Use

ICAO Annex 14 Vol II - EASA

CAP 437

■ Light segment

■ H Marking

■ T/P circle

Main characteristics:			
Type:	TD-X	Adressing - Monitor- ing:	DALI compliant
Height:	<25mm	Material:	Machnied Aluminum - borosilicate

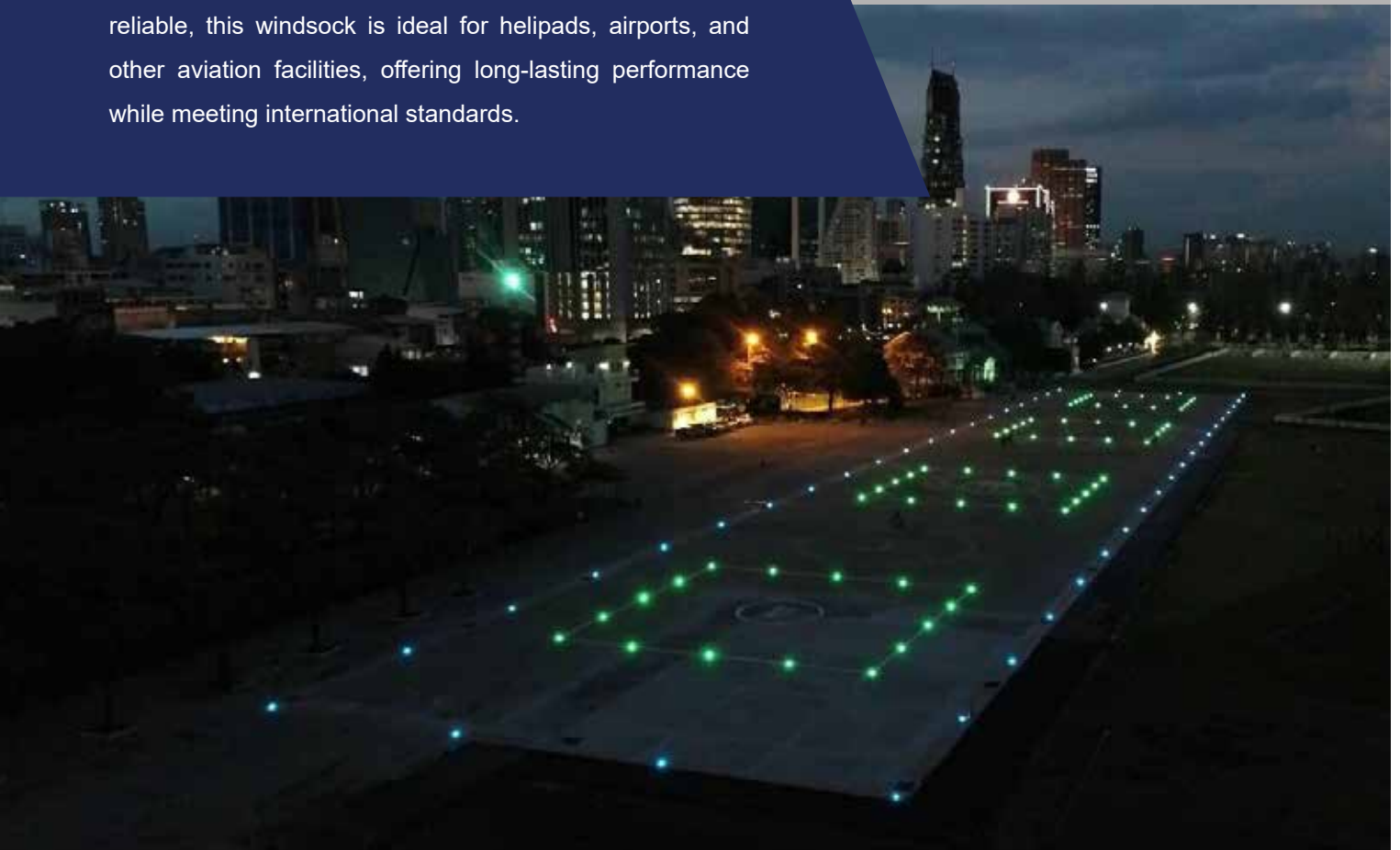
Each TD/PM system must be tailored to the specific size and design of the helipad installation. The system consists of multiple components, all working together to ensure optimal performance and safety. To get the best solution for your needs, we recommend requesting a complete, customized offer based on your installation requirements.

The TD-X make also possible to install the wiring inset or into the deck.

# ■ Wind Direction Indicator

## Internally Lighted

The windsock with internal lighting provides clear visibility of wind direction and strength, day and night. With integrated lighting, it ensures optimal visibility in all weather conditions, enhancing safety for aviation operations. Durable and reliable, this windsock is ideal for helipads, airports, and other aviation facilities, offering long-lasting performance while meeting international standards.



“A clear and quick reading of wind conditions, ensuring safe operations every night.”



# WDI 400-60

The 4-meter tiltable windsock with internal lighting offers clear wind direction visibility both day and night. Featuring integrated lighting and an obstruction light at the mast's top, it ensures maximum visibility and safety. Its tiltable design simplifies maintenance, while the durable construction guarantees consistent performance in all weather conditions, making it an ideal choice for helipads.

## Use

ICAO Annex 14 Vol II - EASA

☐ Wind direction indicator

Main characteristics:			
Type:	WDI 400 - 60	Adressing - Monitor- ing:	No
Height:	4 meters	Material:	Galvanized steel
Power:	20W		Painted steel
Voltage:	110-240VAC	Design:	Tiltable - one man operation



# WDI 600-60

The 6-meter tiltable windsock, also equipped with internal lighting and an obstruction light at the top, provides reliable wind direction visibility around the clock. Its rugged design ensures dependable performance in harsh environments, while the tiltable feature allows for easy maintenance. This makes it a perfect fit for helipads and airfields alike.

## Use

ICAO Annex 14 Vol II - EASA

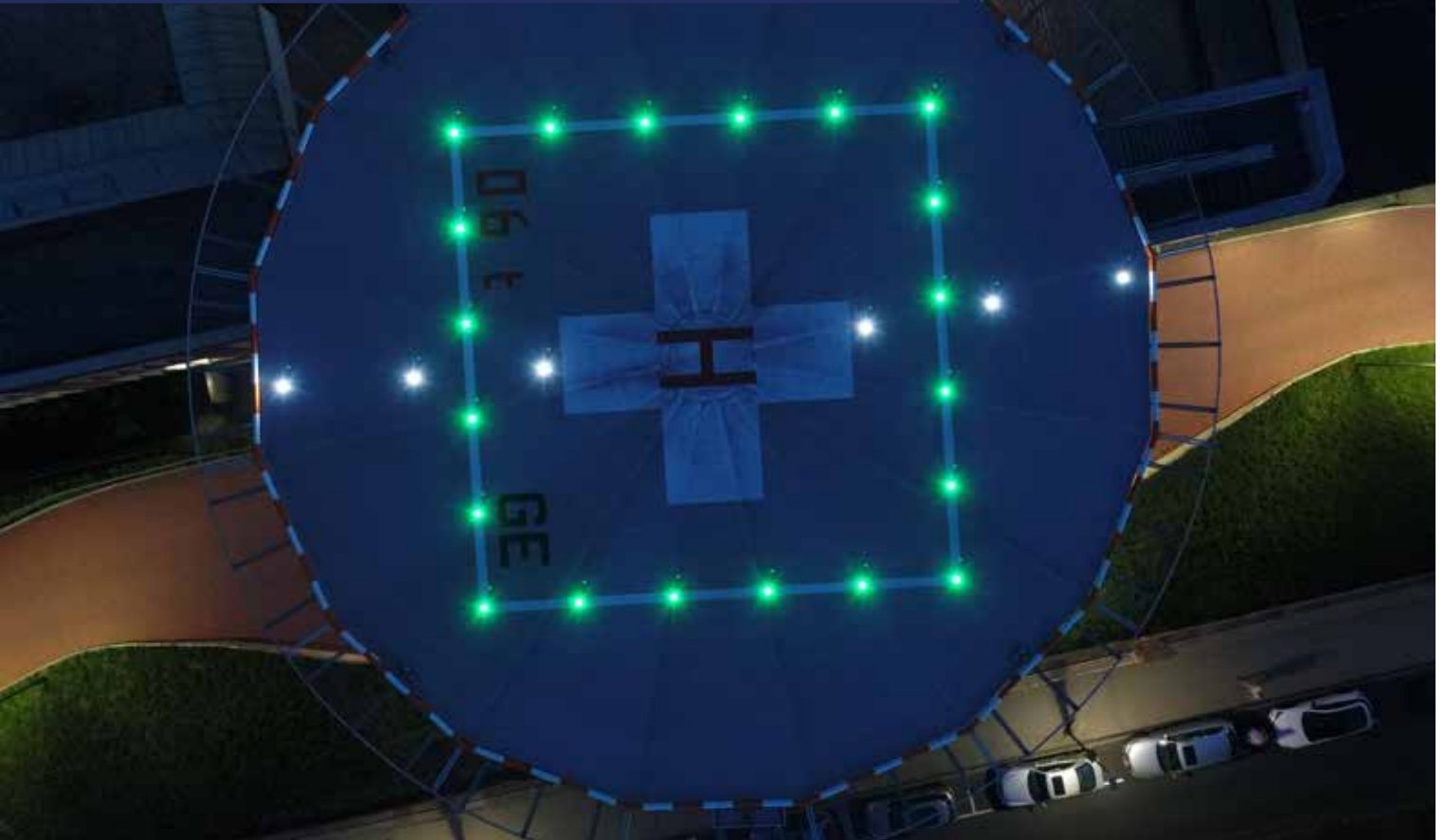
☐ Wind direction indicator

Main characteristics:			
Type:	WDI 600 - 60	Adressing - Monitor- ing:	No
Height:	6 meters	Material:	Galvanized steel
Power:	20W		Painted steel
Voltage:	110-240VAC	Design:	Tiltable - one man operation

# ■ Heliport Beacon

## For Critical Approach

The Heliport Beacon, compliant with ICAO standards, is a flashing light designed to ensure visibility in low-visibility conditions and from long distances. This high-intensity light allows pilots to easily locate the helipad even in challenging environments, providing clear guidance during night operations and adverse weather.



“An essential aid when the helipad is surrounded by city lights.”



# AL-x Flash

The AL-Xflash heliport beacon delivers long-range visibility through powerful flashes and Morse code signaling, making helipad identification effortless in any environment. Fully compliant with ICAO standards, it enhances both safety and reliability in aviation operations.

---

## Use

ICAO Annex 14 Vol II - EASA

☐ Heliport Beacon

Main characteristics:			
Type:	AL-xFlash	Adressing - Monitor- ing:	No
Height:	380mm	Material:	Aluminum
Power:	max 240W		Thermo coating
Voltage:	110-240VAC	Alarm:	Dry contact

# ■ HAPI - VAGS

## For Critical Approach

For environments where precise approach angles and slopes are critical, HAPI (Helicopter Approach Path Indicator) and VAGS (Visual Approach Guidance System) are essential. These systems provide pilots with real-time visual feedback, helping them adjust their approach with precision. Designed for high-traffic helipads, HAPI and VAGS improve operational safety by guiding pilots through the correct descent angles, even in poor weather or low-visibility conditions.



“2-axis visual guidance”





# HAPI AuX

The HAPI system delivers precise visual guidance for helicopter pilots during approach and landing. Specifically engineered to facilitate safe and accurate descents, it enhances visibility in all weather conditions and complies with international aviation standards.

## Use

ICAO Annex 14 Vol II - EASA

 Helicopter Approach Path Indicator

Main characteristics:			
Type:	HAPI-AuX	Adressing - Monitor- ing:	No
Size:	780x380x780mm	Material:	Aluminum - Stainless steel
Power:	max 150W		Thermo coating
Voltage:	110-240VAC	Alarm:	Dry contact



# SAGAx



The SAGAx is a cutting-edge Visual Approach Guidance System (VAGS) set to launch in 2025. Designed to provide precise visual cues for safe helicopter landings, SAGAx introduces advanced innovation to approach path guidance, ensuring both safety and efficiency.

## Use

ICAO Annex 14 Vol II - EASA

 VAGS"

Main characteristics:			
Type:	SAGAx	Adressing - Monitor- ing:	Yes, Dali compliant
Nb of units:	2	Material:	Aluminum - Stainless steel
Power:	max 150W		Thermo coating
Voltage:	110-240VAC	Avaibility:	Late 2025



# ■ Base and Adapter

## Simple and Effective fixing

Our bases and fixation accessories are designed for durability and simplicity, guaranteeing secure, long-lasting installations. Built to withstand harsh environments and heavy use, these components enable straightforward installation, minimizing setup time while ensuring reliable performance. Whether for lighting systems or other critical infrastructure, our fixation solutions provide the necessary stability.



“Designed for seamless compatibility with existing bases, ensuring simple and efficient upgrades.”

# HXX Base 150



The 150 mm aluminum recessed base guarantees secure and durable installation of lighting systems. Its robust, corrosion-resistant construction ensures long-term reliability, while the recessed design facilitates seamless integration into various surfaces.

Main characteristics:			
For:	150mm lights	Diameter:	159 mm
Cablen entry:	back or side	Depth:	122mm

# HXX Base 8"



The 8-inch base is engineered to meet airport standards, providing a sturdy and dependable foundation for lighting systems. Its durable design ensures long-lasting performance in demanding environments, while the standardized size allows for easy integration into existing infrastructure.

Main characteristics:			
For:	150mm lights with adapter	Diameter:	8 inches
Cablen entry:	back or side	Depth:	135mm
Material:	Aluminium		

# 8" adapter ring



The 8-inch adapter ring enables the installation of 150 mm lights in standard 8-inch bases, making it an ideal solution for renovation projects. Its design ensures a secure fit, facilitating seamless upgrades without the need for significant modifications to existing infrastructure.

Main characteristics:			
For:	150mm standard 8" base	Diameter:	8 inches
Material:	Aluminium	Depth:	26 mm

# ■ Control Panel

## Simple and Universal

Our control panels are offered in three versions, each designed for simplicity and ease of use. Featuring a plug-and-play design, these panels allow for effortless installation and reliable operation. Whether you require basic functionality or advanced features, our control panels provide efficient control and seamless integration with your helipad or lighting systems.



“Plug & Play”



# ControlPanel

Our range of control panels provides a straightforward yet comprehensive solution, ready for immediate use with three standard models. Featuring plug-and-play functionality, these panels enable effortless installation and intuitive controls, ensuring reliable performance for helipad and airfield lighting systems, whether for basic operations or more complex needs.

## Model 1

Our most economical control panel features a single dimmable LBR II DA power supply with a 230V output. Designed for simplicity, it includes an easy-to-use control button directly on the panel, making it ideal for basic helipad lighting requirements. This plug-and-play solution delivers reliable performance at an affordable price, ensuring quick and efficient installation.

Main characteristics:			
Type:	Model 1	Alarm:	Parital
Size:	700x500x250mm	Material:	Painted steel
LBR II DA circuit:	1	Options	Stainless steel enclosure
230V out circuit:	1	Avaibility:	Lighting arrstor
Dimming:	Yes 3 steps		

## Model 2

The Model 2 control panel enhances functionality with two LBR II DA dimmable power supplies, three 230V outputs, and one fault output for improved safety monitoring. It also includes an internal 230V socket for added convenience, making it a versatile choice for more advanced helipad lighting systems. This panel strikes a balance between simplicity and increased capacity.

Main characteristics:			
Type:	Model 2	Alarm:	Yes
Size:	800x800x300mm	Material:	Painted steel
LBR II DA circuit:	2	Options	Stainless steel enclosure
230V out circuit:	3		Lighting arrestor
Dimming:	Yes 3 steps		Remote connection for push button

## Model 3

The Model 3 control panel represents the most comprehensive solution in our lineup, featuring three LBR II DA dimmable power supplies, five 230V circuits, and an alarm output. Additionally, it offers remote control connection capabilities, making it ideal for larger helipad lighting systems.

Main characteristics:			
Type:	Model 2	Alarm:	Yes
Size:	1000x1000x300mm	Material:	Painted steel
LBR II DA circuit:	3	Remote:	Remote connection for push button
230V out circuit:	5	Options:	Stainless steel enclosure
Dimming:	Yes 3 steps + auxiliary 5 Steps		Lighting arrestor

# ■ Radio controller and GSM

## Remote Activation by Crews

Our VHF and GSM controllers enable pilots to remotely activate and adjust the brightness of helipad lighting directly from their helicopters. These systems streamline operations, providing increased safety and convenience by allowing full control over the lighting without the need for ground personnel.



“Three clicks on the mic button,  
and the helipad lights up.”



# ARC-357



The ARC-357 allows pilots to control helipad lighting using a standard VHF radio, eliminating the need for additional equipment in the helicopter. With three adjustable brightness levels (3-5-7), it provides a simple and effective solution for managing lighting remotely, ensuring ease of use without requiring ground personnel.

## Use

- ☐ Radio controller

Main characteristics:			
Type:	ARC-357	Output type:	Dry contact [3]
Accessories:	Antenna with cable (5m)	Frequency:	118.00-136.975Mhz
Power:	max 20W	Chaneling	25kHz and 8.33 kHz
Voltage:	110-240VAC	Frenquency adjuste- ment:	By rotaty knob



# ARC-SMS

The ARC-GSM enables pilots to activate helipad lighting with a simple phone call and adjust brightness by sending an SMS. This system is particularly useful when securing a dedicated VHF aviation frequency is not feasible, offering an easy and effective solution for remote lighting control without ground personnel.



## Use

- ☐ GSM-SMS remote control

Main characteristics:			
Type:	ARC-GSM	Output type:	Dry contact [4]
Accessories:	Antenna with cable (2m)	Network:	4G (FDD), GSM, EDGE, GPRS (2G)
Power:	max 20W	Confimation:	Yes per SMS
Voltage:	110-240VAC	Alarm:	Yes per SMS
Output:	4	Timer:	Yes, 20 minutes



# Automatic Surveillance and Control



## Automation, Independence, and Safety

The Helitracker operates autonomously, similar to a secondary radar, monitoring traffic within the helipad zone. It automatically activates the helipad lighting when aircraft are detected, ensuring seamless operations without manual intervention. Additionally, it includes advanced safety features, such as visual notifications of approaching traffic, enhancing situational awareness. In emergencies, further functionalities are available, making it an essential tool for both operational efficiency and safety.

“Like a secondary radar, but within a realistic budget.”





# HeliTracker



The HeliTracker is an advanced transponder tracking system designed for helipads and airfields. It automatically activates the lighting system when an aircraft enters the defined detection zone, ensuring safe landings and takeoffs. With a detection range of up to 100 km, it allows precise control by setting custom detection and altitude parameters. Additionally, it features a “collision zone” to monitor multiple aircraft simultaneously, triggering visual alerts when another aircraft is detected in the same airspace. The system also offers advanced transponder filtering and supports non-ADS-B OUT transponders.

## Use

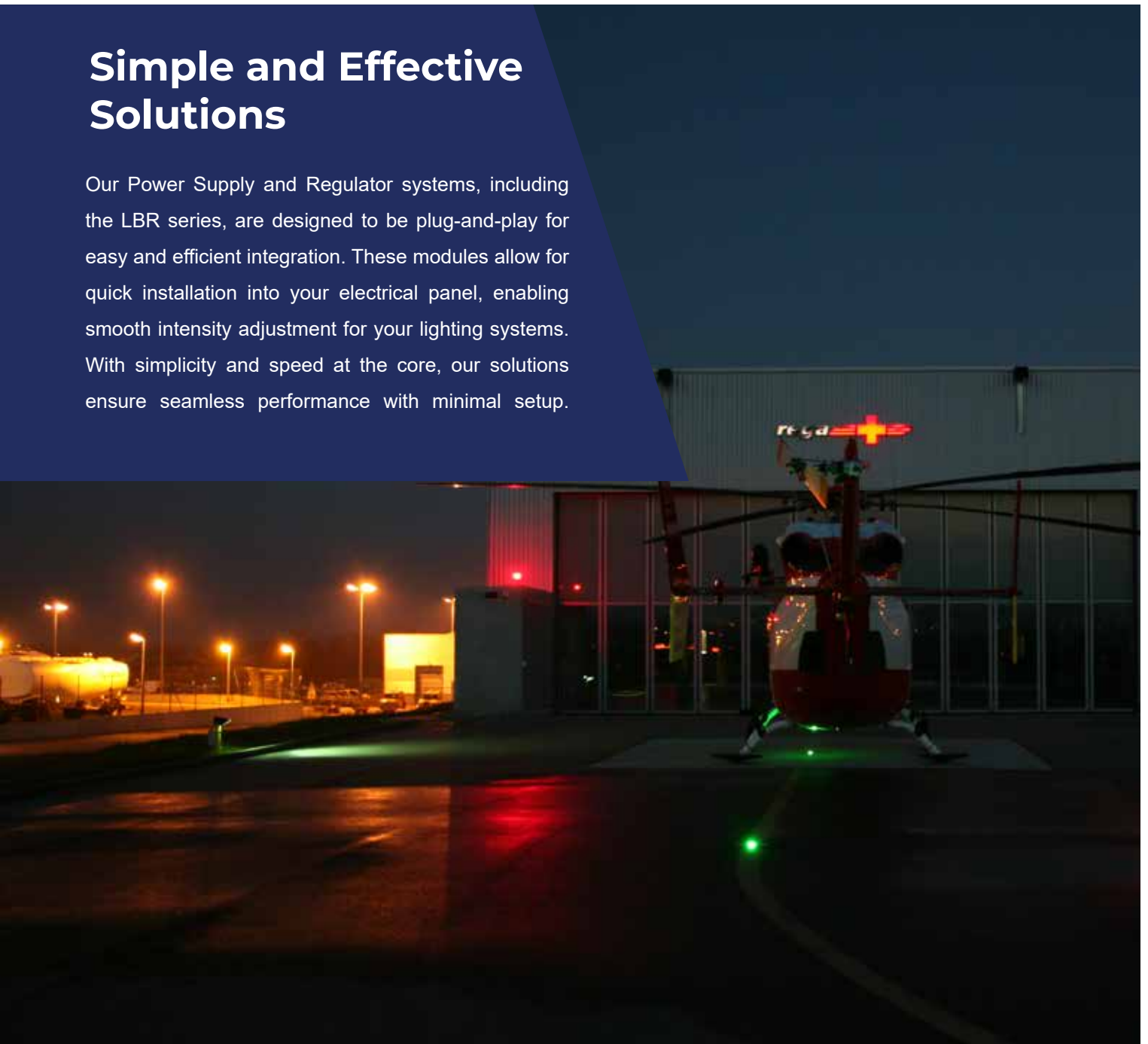
- ☐ Automatic controller

Main characteristics:			
Type:	HeliTracker	Output type:	Dry contact [2]
Accessories:	Antenna with cable (10m)	Design:	ADS-B receiver
Power:	max 20W	Configuration:	Via touch interface
Voltage:	110-240VAC	Aircraft filtering:	Yes
Output:	2	Adjustable detection:	Yes

# ■ Power Supply and Regulator

## Simple and Effective Solutions

Our Power Supply and Regulator systems, including the LBR series, are designed to be plug-and-play for easy and efficient integration. These modules allow for quick installation into your electrical panel, enabling smooth intensity adjustment for your lighting systems. With simplicity and speed at the core, our solutions ensure seamless performance with minimal setup.





# LBR II DA



The LBR II DA is a versatile and compact power supply and regulator, designed to simplify the control of helipad lighting systems. Equipped with a 48VDC 10A power supply and a 3-level brightness regulator, it offers easy, plug-and-play installation and seamless integration into existing electrical panels.

## Use

- ☐ Power supply and regulator

Main characteristics:			
Type:	LBR II DA	Protection:	Isulation, over current, over temp.
Output:	48VDC + Control	Alarm:	Yes
Power:	max 480W	Fixing:	Din Rail
Voltage:	110-240VAC	Nb. of light:	~35 lights
Output:	1	Control:	Push botton connection

## ■ Portable lighting system

### Autonomous and Lightweight

Designed for emergency situations, power outages, maintenance work, or temporary helipads, portable helipad lighting systems offer a flexible and reliable solution. These systems are quick to deploy and provide essential lighting for safe helicopter landings and takeoffs in remote or temporary locations. With durable, rechargeable LED lights, they ensure optimal visibility and safety, making them ideal for emergency services, construction sites, and temporary operations where fixed lighting is unavailable.



“In less than two minutes, the helipad is fully visible and ready for night operations.”



# HeliCase 6



The HeliCase is a portable helipad lighting system conveniently housed in a durable, waterproof carrying case. Designed for rapid deployment in remote or temporary locations, the HeliCase includes all necessary components to create a fully functional helipad lighting system. With easy setup, rechargeable NiMH batteries offering up to 100 hours of autonomy, and high-performance LED lights, it provides reliable visibility for safe helicopter operations in any environment.

## Use

- ☐ Portable helipad lighting system

Main characteristics:			
Number of light:	6 per set	Dimming:	Yes
Autonomy:	Up to 100 hours	Remote control:	Up to 1 km
Light color:	Green, White, Yellow, Red, Blue, IR	Fixing:	Self, or with accesories
Battery:	NimH	Material:	Aluminum or Polypropylene

## Final Word

### Thank You for 20 Years of Trust

At Aerolighting, we are dedicated to quality and customer satisfaction. With nearly 20 years of experience, our team of committed professionals is here to support you every step of the way, ensuring that your operations run smoothly and efficiently. Our robust solutions are engineered for long-lasting performance, delivering reliable service for years without the need for constant maintenance or replacement.

In this catalog, you will discover our range of standard products. However, we also specialize in crafting custom solutions tailored to your specific needs, manufactured daily with the same commitment to excellence.

When you choose Aerolighting, you are choosing peace of mind. Our systems are built to guarantee the continuity of your operations, allowing you to focus on what matters most while we take care of the details. Trust Aerolighting for solutions that deliver durability, expertise, and unwavering support.





**Aerolighting**  
SWITZERLAND

## Contact Information

---

 [info@aerolighting.ch](mailto:info@aerolighting.ch)  
 [www.aerolighting.ch](http://www.aerolighting.ch)  
 +41 26 475 42 53

 Aerolighting SA  
Rte de l'industrie 35  
CH-1791 Courtaman  
Switzerland